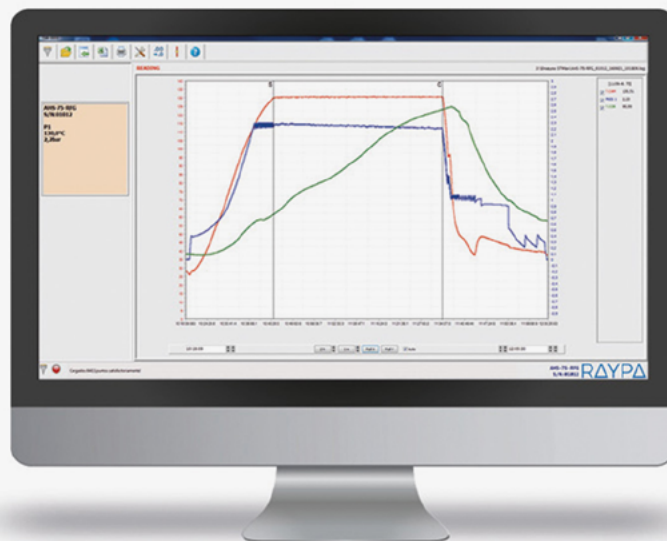


MEDIA PREPARATOR SOFTWARE

SWMP

ALLOWS THE DISPLAY AND RECORDING IN REAL TIME OR AFTER EACH CYCLE PERFORMED IN THE MEDIA PREPARATOR

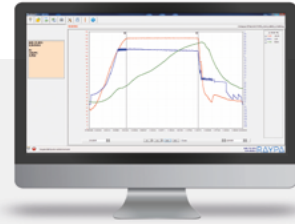
ACCESSORY



SWMP software

APPLICATION

- + Allows the visualization, documentation and printing of the processes carried out in the media preparator.



What does it include?

- 1 Ethernet cable 1.8m in length.
- 1 Ethernet to USB adapter.
- 1 USB memory stick with the software.



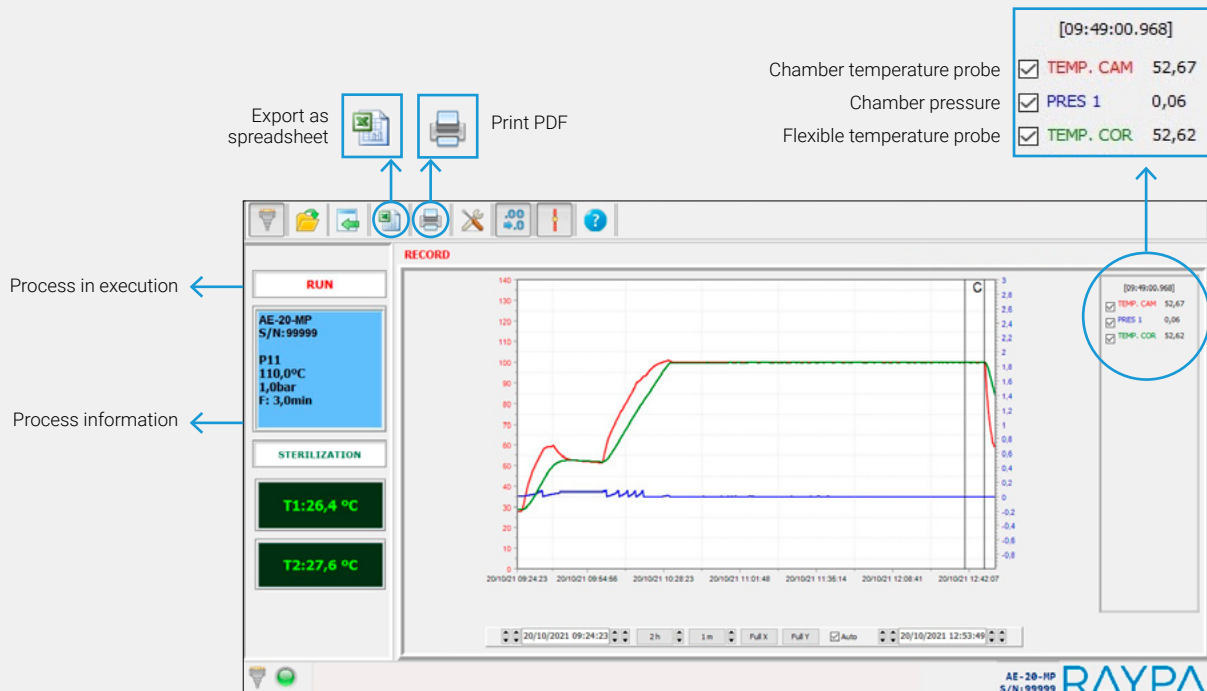
INSTALLATION AND OPERATION

- The program installation will be done by copying the .exe file from the USB drive directly to the PC. It is very important to follow the steps indicated in the specific manual for this accessory.
- After installation, it allows real time and a posteriori display of the values.
- Below, all the options that this software offers are expanded upon.

Characteristics

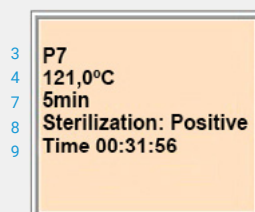
- Allows in-depth analysis of data related to each cycle.
- Intuitive display of information on the cycles performed: batch record, outcome, probes temperature, pressure, serial number, autoclave model, errors, etc.
- Access is protected by username and password.
- Available languages are: English, Spanish, French and Italian.
- The export of autoclave memory cycles is encrypted (.DAT files).

Data displayed on screen



Process information

1. Media preparator model.
2. Serial number.
3. Program number.
4. Temperature.
5. Counterpressure.
6. Selected F_0 .
7. Sterilization time.
8. Cycle result.
9. Total cycle time.



Program visualization



Program recording

DETAILED DISPLAY OF CYCLE DATA

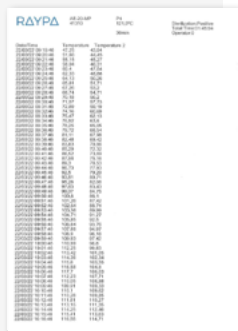
- The data is exported directly to the memory stick connected to the USB port of the media preparator.¹
- Once the memory stick has the data stored, connect it to a computer. The record is made in .DAT format and then the .DAT files are imported from the software.

Once the records have been viewed using the software, there are two options for data extraction through report generation:

A. Generation of reports in .PDF format

Generates a file whose time interval² will be the one configured in the equipment. These reports contain the following information:

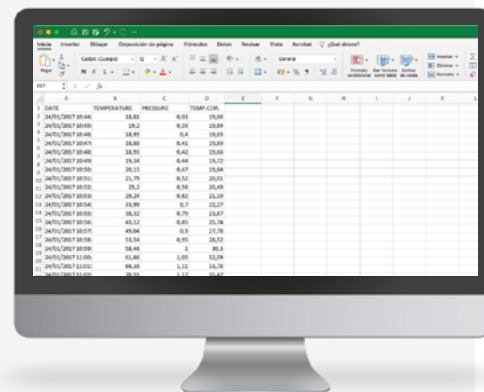
1. Model and serial number of the equipment.
2. Name and number of the selected program.
3. Programmed reference temperature.
4. Counterpressure value.
5. Programmed F_0 target values.
6. Cycle result.
7. Total time.
8. Date and time.
9. Evolution of F_0 values achieved.
10. Evolution of chamber temperature.
11. Evolution of temperature in flexible probe.
12. Cycle graph.
13. Evolution of chamber pressure.



B. Generation of reports in .CSV format

Generates a report that can be viewed in Excel or an equivalent software. This is a file used to process cycle data. It is possible to configure the desired time interval* when performing the export. These reports contain the following information:

1. Date and time.
2. Evolution of chamber temperature.
3. Evolution of chamber pressure.
4. Evolution of temperature in flexible probe.



¹ The media preparator's own microprocessor has a storage capacity of up to 4MB, which is equivalent to storing 50 programs and 128 historical records of the cycles performed.

² The data capture time interval of each report can be customized by the user in the media preparator to a minimum of 1 second. Subsequently, the time scale displayed for each report can also be customized when generating .CSV reports; in the case of generating a .PDF type report, the interval will be the one set in the media preparator.

REAL-TIME VISUALIZATION

- To visualize the evolution of a cycle in real time on the software, the network cable and the Ethernet to USB adapter must be connected to the media preparator's Ethernet port and the computer.
- Besides displaying the cycle in real time, a detailed file containing multiple autoclave data (.LOG file) is generated at the end of the cycle and it can be reopened using this software. This file is mainly used by RAYPA technical service for troubleshooting purposes. It is also used as an analysis tool by experienced users.

Technical data

Reference	SWMP
Operating system	Windows 2000 and above
Minimum screen resolution px	1024 x 768

